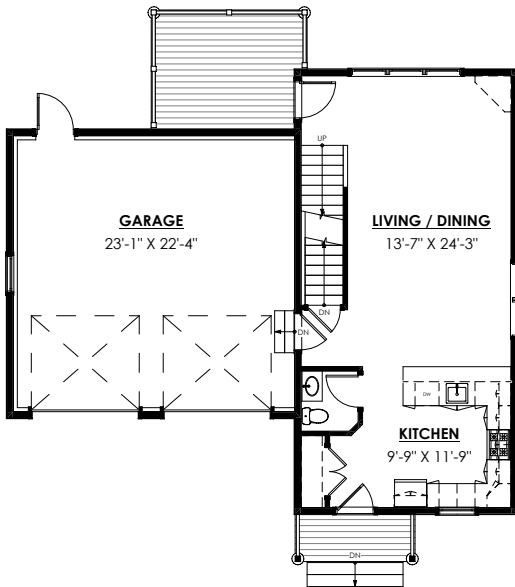


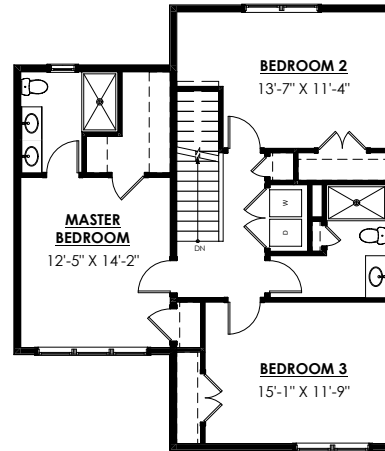


RESIDENCE "F"
 3 BEDROOMS / 2.5 BATHS

FIRST LEVEL:	630 SQFT
SECOND LEVEL:	929 SQFT
TOTAL:	1,559 SQFT



FIRST LEVEL
 CEILING HEIGHT = 9'-0"



SECOND LEVEL
 CEILING HEIGHT = 8'-0"