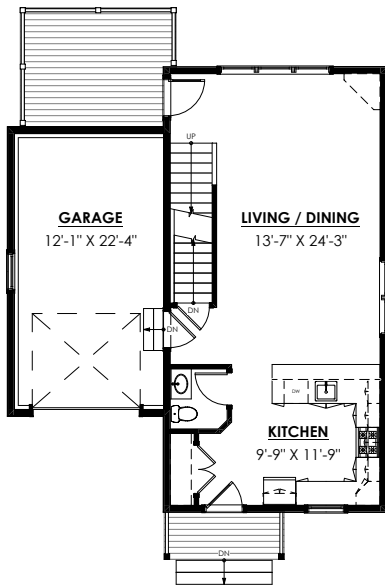




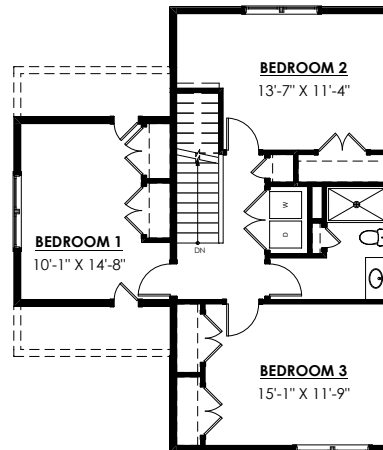
**RESIDENCE "L"**  
 3 BEDROOMS / 1.5 BATHS

FIRST LEVEL:	630 SQFT
SECOND LEVEL:	820 SQFT
TOTAL:	1,450 SQFT



**FIRST LEVEL**

CEILING HEIGHT = 9'-0"



**SECOND LEVEL**

CEILING HEIGHT = 8'-0"